

# xProTFT Automotive LCD-Monitors

xProTFT monitors have been specially designed for automotive applications, where robustness, perfect optical characteristics and a wide temperature range are essential.

Available display sizes:

- Super compact 6.5" monitor with super crispy display specially for daylight applications
- 10.4" standard size, best fit for most applications, wide operating temperature range
- 12.1" enlarged monitor in compact size

xProTFT monitors provide a bayonett style fixture to a vacuum suction device. Thereby xProTFT monitors can be safely mounted within a minute.

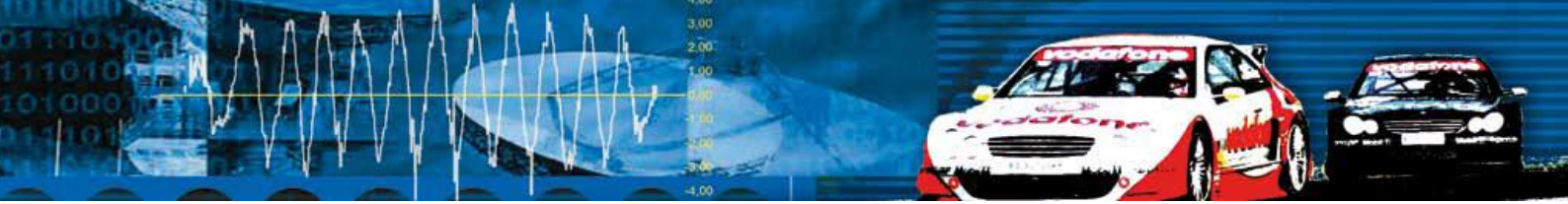
Power Supply is in the automotive range of 10 ... 18 VDC. Others, i.e. for commercial trucks, are available on request.

xProTFT monitors adapt to standard VGA signals and provide a native resolution of 1024 \* 768. Lower resolutions of the graphics card can be synchronized and downsized.

## Common Technical Data for all Display Sizes

- All monitors come with a high resolution of 1024\*768 resolution
- low power LED backlight technology throughout all display sizes
- protection pane with lamda/4 coating to protect TFT surface against accidental damage
- Touch option with brilliant optical characteristic
- USB-Hub with 2 downstream ports on monitors with touch option
- Dimming function per potentiometer
- Auto-dimming per sensor ( switchable )
- Power Supply 10 ... 18 VDC ( others on request ), with galvanic isolation towards vehicle
- Metal housing with slim design / reduced size
- Antireflex paint





## Technical Data 6.5" Monitor

- Luminance 650 cd/m<sup>2</sup>
- Contrast Ratio 500:1
- Response Time 25 ms
- Viewing Angle horizontal 160 degrees, vertical 140 degrees
- Temperature range down to -20 to + 70 degrees Celsius
- Power Consumption appx. 10W
- Size appxm. . 172 \* 126 \* 15 mm ( plus 20 mm for converter unit )
- Weight appxm. 800 g

## Technical Data 10.4" Monitor

- Luminance 400 cd/m<sup>2</sup>
- Contrast Ratio 900:1
- Response Time 18 ms
- Viewing Angle horizontal 160 degrees, vertical 160 degrees
- Temperature range down to -30 to + 80 degrees Celsius
- Power Consumption appx. 10W
- Size appxm. . tbd \* 15 mm ( plus 20 mm for converter unit )
- Weight appxm. 1000 g

## Technical Data 12.1" Monitor

- Luminance 650 cd/m<sup>2</sup>
- Contrast Ratio 600:1
- Response Time 25 ms
- Viewing Angle horizontal 140 degrees, vertical 120 degrees
- Temperature range down to -20 to + 60 degrees Celsius
- Power Consumption appx. 10W
- Size appxm. 290 \* 220 \* 15 mm ( plus 20 mm for converter unit )
- Weight appxm. 1200 g

**Preliminary Data**

